



Dane the "doctor" . . .



. . . and Dane the actor

ERIC DANE

REEL Dane's "McSteamy" look on *Grey's Anatomy* (Thursdays at 9 p.m., ABC) is a classic tapered cut that's slightly grown out. It's almost wash-and-wear, but "to help the hair retain softness and gentle movement, I'd recommend using a hair cream," Arrojo says. We like **Kenra Platinum Grooming Pomade 4**.



REAL When not playing a doctor on TV, Danes goes shorter, but since his hair is not buzzed too close, it still has styling potential. "A small dab of texture paste could spike it up a bit and play into that natural wave he has," Arrojo says. Try **Paul Mitchell Tea Tree Styling Wax**.



Krasinski at *The Office* . . .



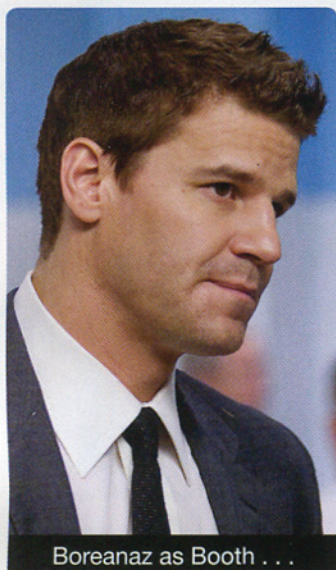
. . . and after hours

JOHN KRASINSKI

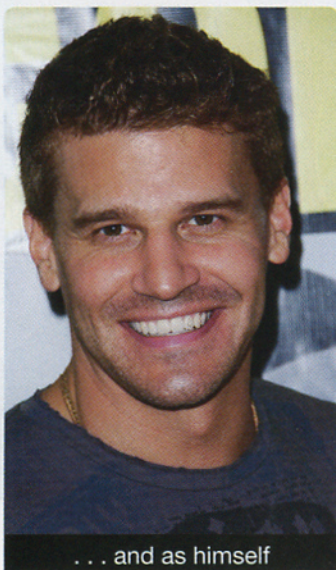
REEL To portray Jim Halpert on *The Office* (Thursdays at 9 p.m., NBC) Krasinski wears his full bangs on his face. It's a look that's "young and charmingly disheveled," Arrojo says. To give the style a little control and keep it from falling flat, work a bit of **Regis DESIGNLINE Texture Cream** though damp hair from roots to ends before blow-drying bangs forward.



REAL "Taking the hair away from the face recalls Old Hollywood glamour," says Arrojo. To achieve this effect, slick back and shape hair with a product such as **Sebastian Gel Forte**, which also adds shine and definition.



Boreanaz as Booth . . .



. . . and as himself

DAVID

REEL This class the sides—is so both on-screen, *Bones* (Thursdays) the spiky front with your hair is thick, **American Crew F** medium to fine hair. **Redken Rough Pa**

REAL Regular maint says: "Make sure the around the back are t this style looking crisp

